

KEY - BIOMASS TO ENERGY FACILITY

1 PYROLYSER BUILDING

2 GAS TO LIQUID TECHNOLOGY, METHANATION AND RESIDUE STORAGE AREA

3 GRINDING HALL

4 STORAGE BUILDING

5 ENGINE HOUSE

6 STACK

7 GAS STORAGE AREA

8b CAR PARK AREA

9 EXHAUST GAS AND FEED STOCK CONDITIONING AND ALGAE PROPAGATION

10 DRYER HALL

11a JETTY

11b JETTY

12 CONTROL BUILDING

13 COLD IRONING BUILDING

14 OFFICES

17 MV ROOM

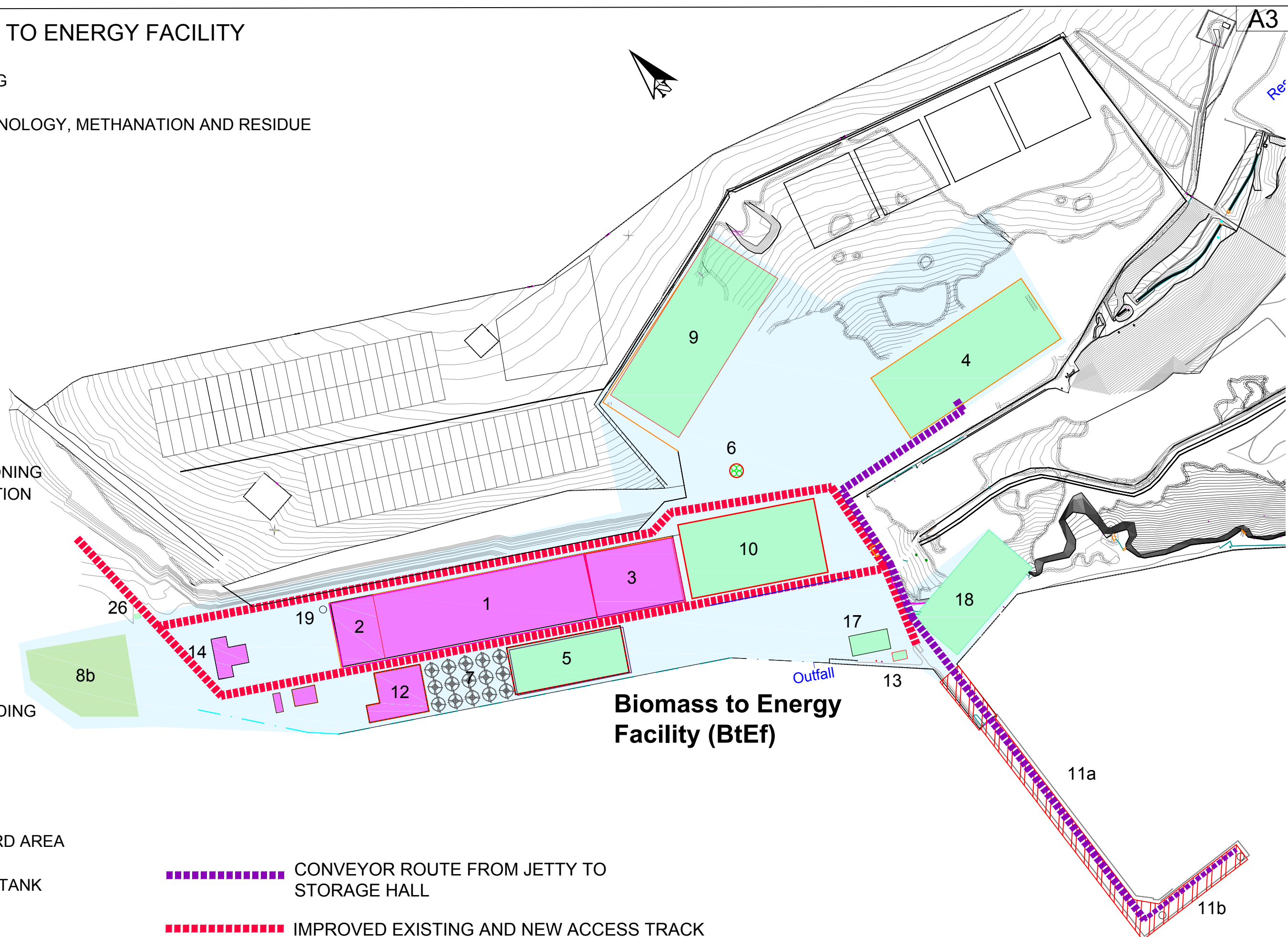
18 TRANSFORMER YARD AREA

19 BIO FUEL STORAGE TANK

26 - GATE HOUSE

CONVEYOR ROUTE FROM JETTY TO STORAGE HALL

IMPROVED EXISTING AND NEW ACCESS TRACK



Biomass to Energy Facility (BtEf)



Client:	Egnedol Wales Ltd	Job:	Biomass to Energy Facility (BtEf)
Date:	December 2015	SCALE:	1:2500 @A3
Drawn:	AD	Checked:	AP
DRNG. NO:	EGW-01-003	REV:	C