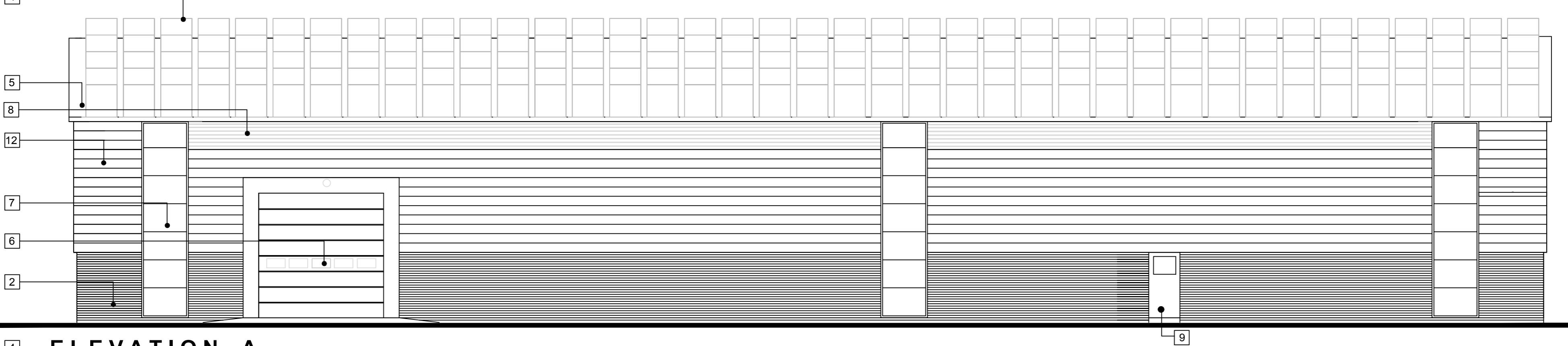
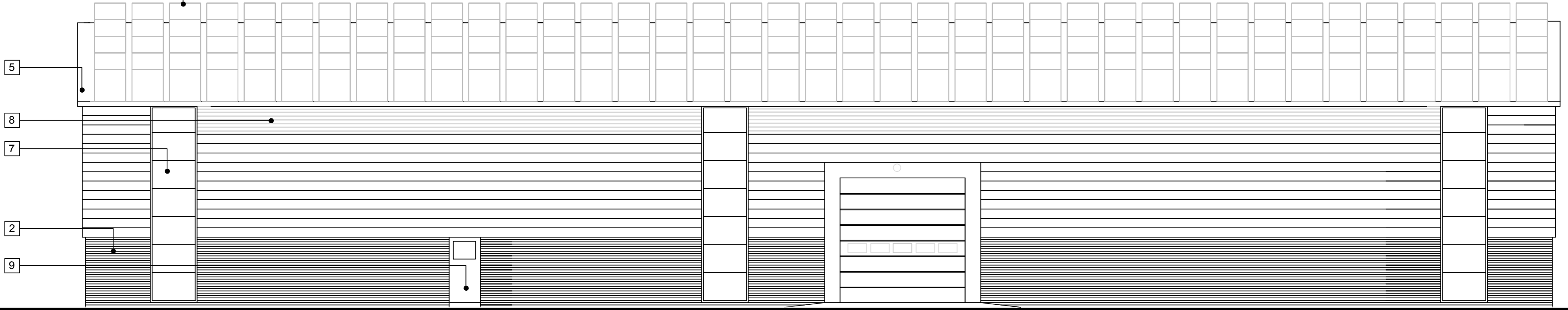


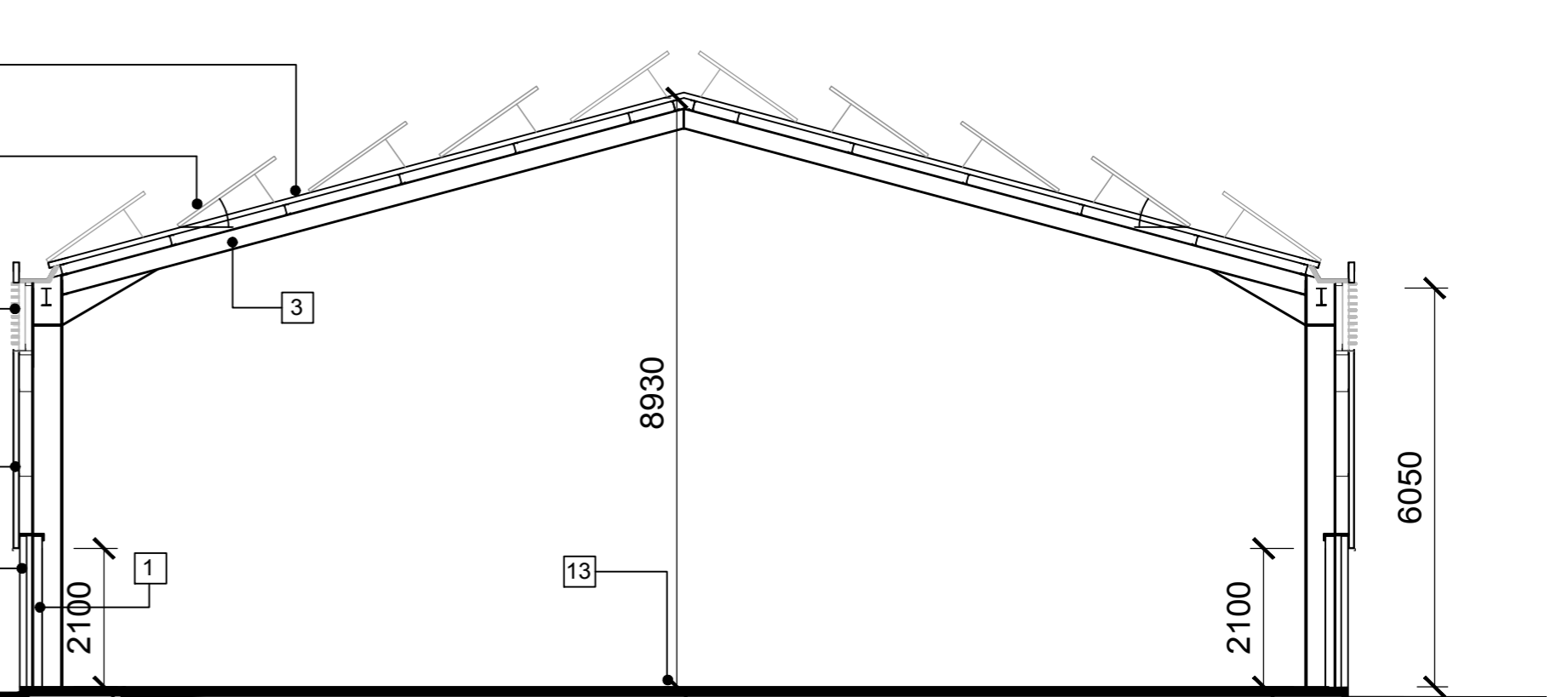
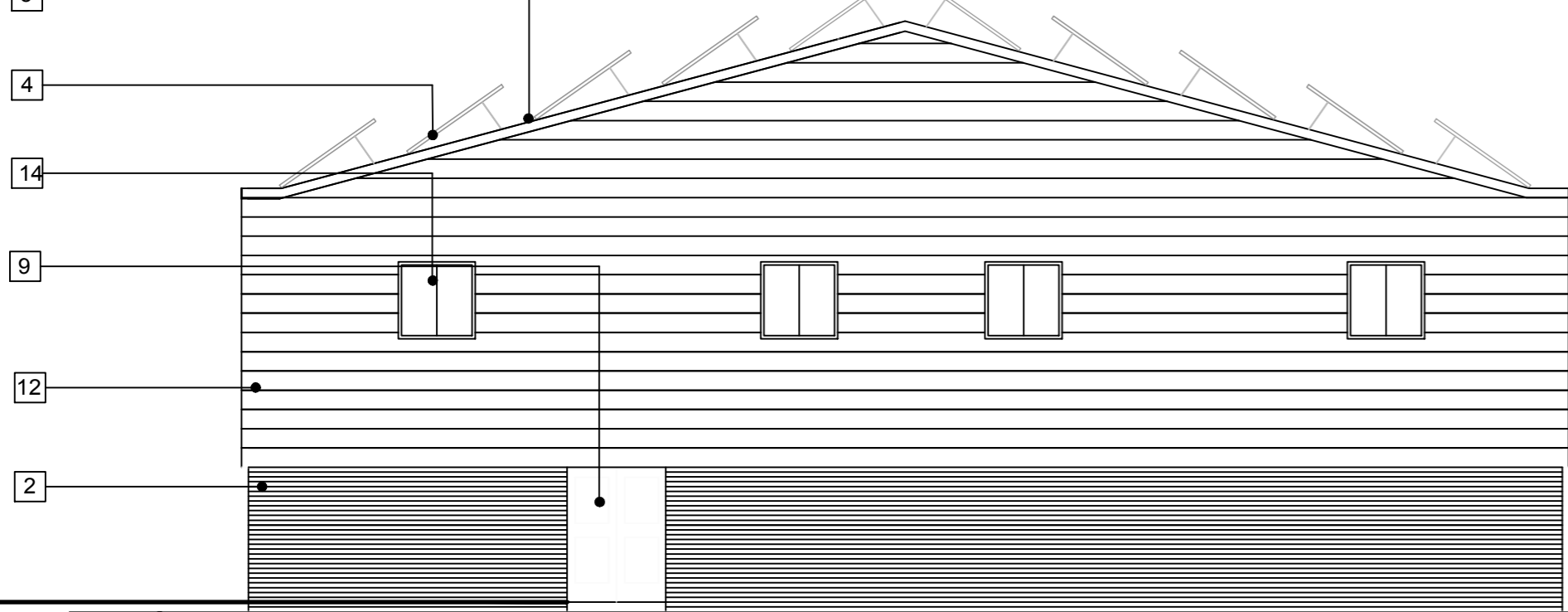
FRONT ELEVATION OF PACKAGING FACILITY



ELEVATION A

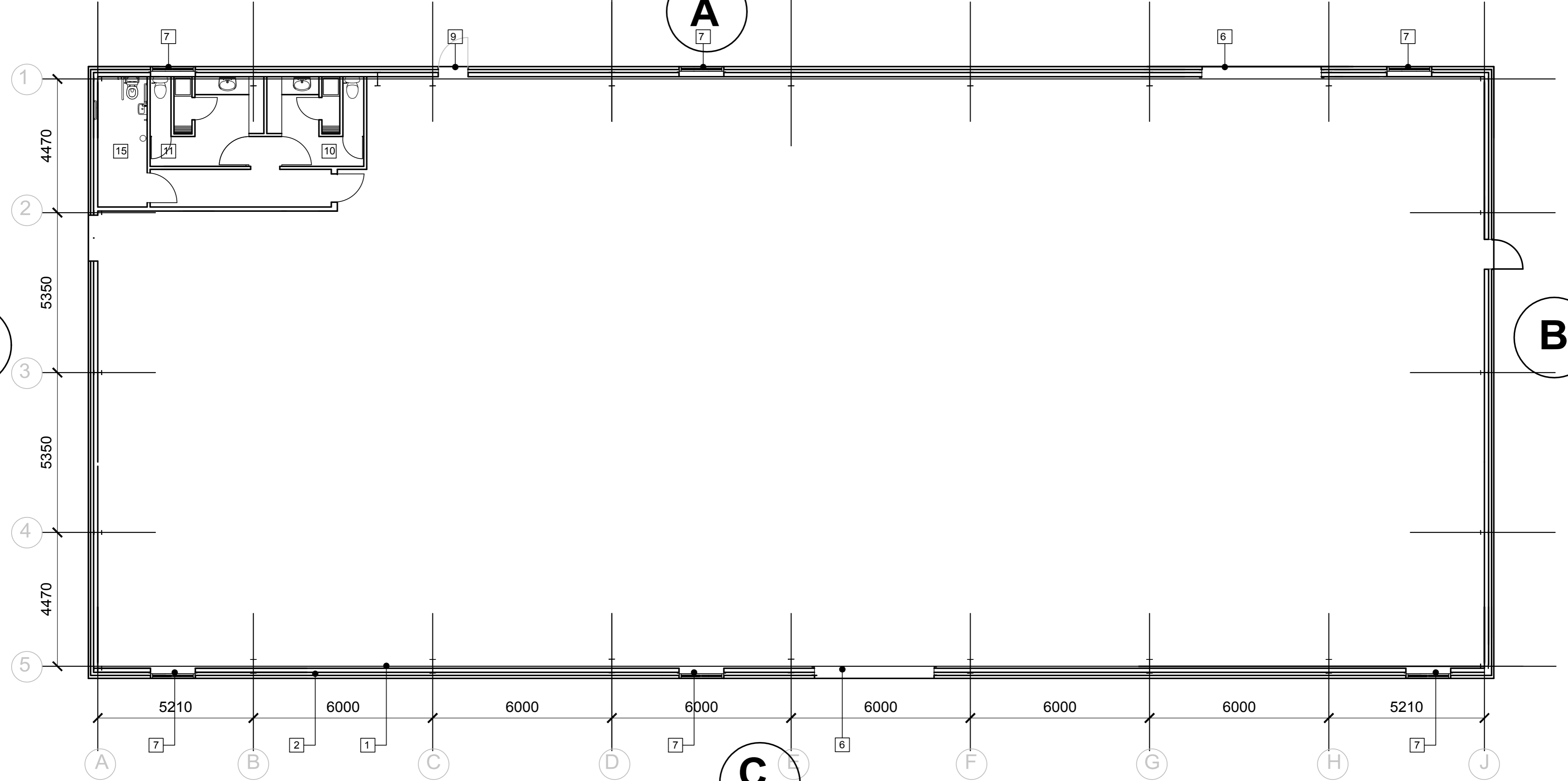


ELEVATION C



GABLE ELEVATION D

TYPICAL SECTION THROUGH PORTAL



BUILDING PLAN

- KEY:**
1. 140MM CONCRETE BLOCK INNER SKIN UP TO 2100 AFFL
 2. 102MM OUTER SKIN OF FACE BRICKWORK
 3. PORTAL FRAME TO STRUCTURAL ENGINEERS DETAILS
 4. 1800X1000 ROOF MOUNTED PV PANELS
 5. COMPOSITE PANEL FULLY INSULATED ROOF SYSTEM KINGSPAN OR SIMILAR SUPPORTED BY STRUCTURAL PURLINS
 6. HORIZONTAL PANEL UP AND OVER DOORS BY CRAWFORD OR SIMILAR
 7. FULL HEIGHT GLAZED UNITS
 8. HIGH LEVEL STEEL LOUVRE SYSTEM WITH INSULATED BLANKING PANELS
 9. STEEL FACED ESCAPE DOORS
 10. MALE FACILITIES (SHOWER, WC AND CHANGING) FORMED IN 100MM METAL STUDWORK 2600MM AFFL
 11. FEMALE FACILITIES (SHOWER, WC AND CHANGING) FORMED IN 100MM METAL STUDWORK 2600MM AFFL
 12. 300MM COMPOSITE STEEL FACED WALL PANEL HORIZONTALLY LAID, PANEL SYSTEM BY KINGSPAN OR SIMILAR
 13. POWER FLOATED CONCRETE SLAB TO ENGINEERS DETAILS
 14. ALUMINIUM POWDER COATED WINDOWS TO FUTURE OFFICE SPACE
 15. DISABLED WC

PROJECT TITLE Preston Plain Station Elevations and Site Plan of Packaging Facility	PROJECT NO. AP-15-07-P16	DATE 15/07/2016	BY Planning
CLIENT Egredol UK Ltd.	SCALE 1:200 / 1:2500	CHECKED November 2015	PROJECT NO. A.1
DRAWN BY HUW GRIFFITHS ARCHITECTS LTD		PROJECT NO. A.1	
PROJECT NO. A.1		PROJECT NO. A.1	

This drawing is copyright © HUW GRIFFITHS ARCHITECTS LTD. All dimensions to be checked on site and not scaled from the drawing.

HUW GRIFFITHS ARCHITECTS LTD
NORTH HILL, 7 ST. JAMES CRESCENT, SWANSEA, SA1 0DP. Tel: 01792 644038 Fax: 01792 654546 Email: design@huwgriffithsarchitects.co.uk