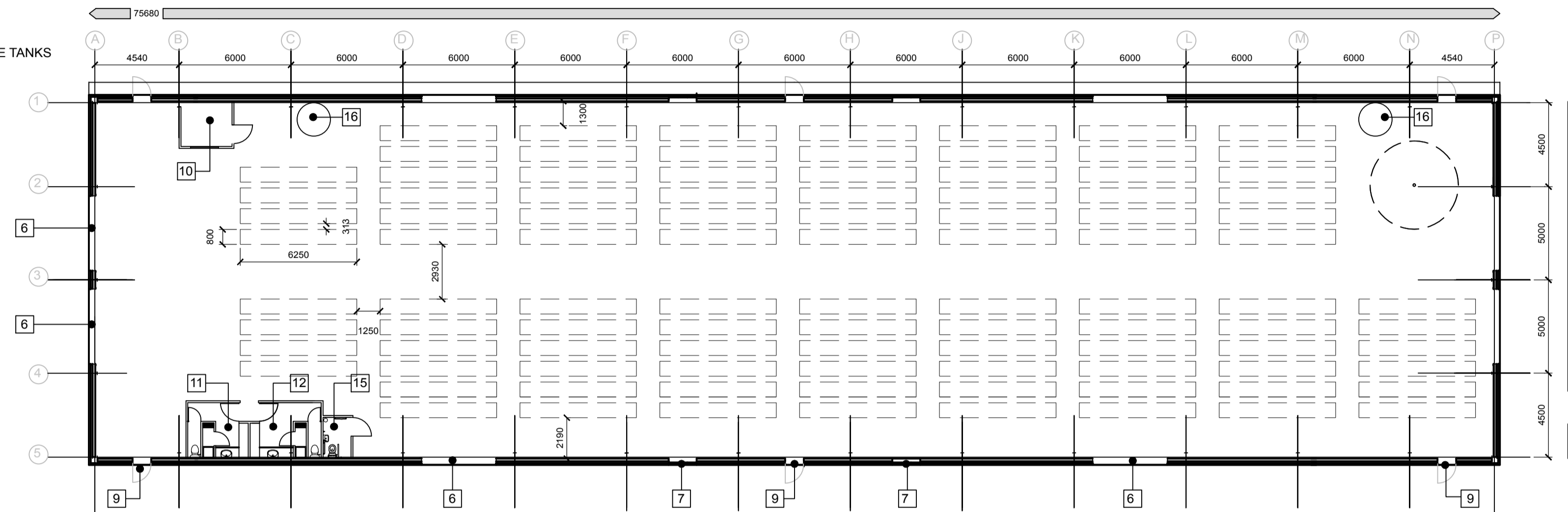


KEY:

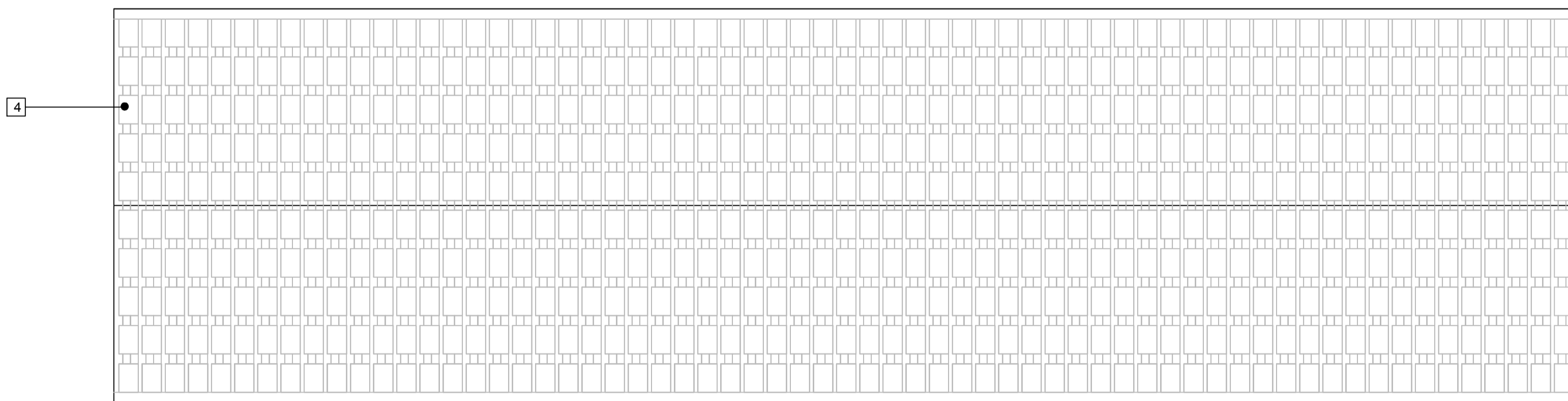
1. 140MM CONCRETE BLOCK INNER SKIN UP TO 2100 AFFL
2. 102MM OUTER SKIN OF FACE BRICKWORK
3. PORTAL FRAME TO STRUCTURAL ENGINEERS DETAILS
4. 1800X1000 ROOF MOUNTED PV PANELS
5. COMPOSITE PANEL FULLY INSULATED ROOF SYSTEM KINGSPAN OR SIMILAR SUPPORTED BY STRUCTURAL PURLINS
6. HORIZONTAL PANEL UP AND OVER DOORS BY CRAWFORD OR SIMILAR
7. FULL HEIGHT GLAZED UNITS
8. HIGH LEVEL STEEL LOUVRE SYSTEM WITH INSULATED BLANKING PANELS
9. STEEL FACED ESCAPE DOORS
10. OFFICE FORMED IN 100MM METAL STUDWORK 2600MM AFFL
11. MALE FACILITIES (SHOWER, WC AND CHANGING) FORMED IN 100MM METAL STUDWORK 2600MM AFFL
12. FEMALE FACILITIES (SHOWER, WC AND CHANGING) FORMED IN 100MM METAL STUDWORK 2600MM AFFL
13. 300MM COMPOSITE STEEL FACED WALL PANEL HORIZONTALLY LAID. PANEL SYSTEM BY KINGSPAN OR SIMILAR
14. POWER FLOATED CONCRETE SLAB TO ENGINEERS DETAILS
15. DISABLED WC
16. RAINWATER CAPTURE TANKS 1800MM DIA 6250L



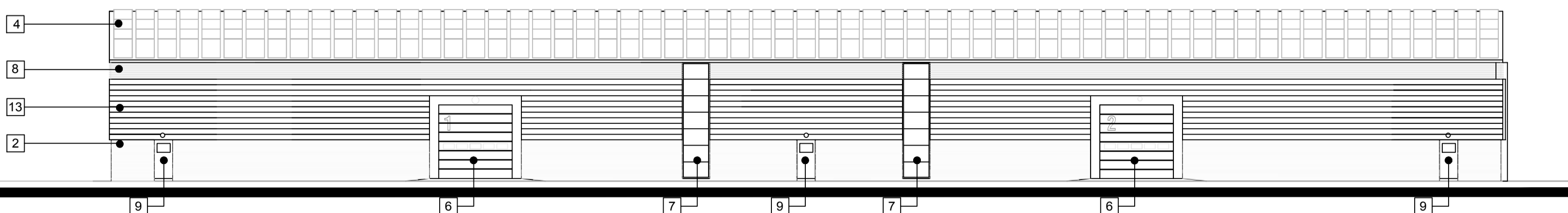
**TYPICAL GABLE ELEVATION OF AQUACULTURE UNITS 21**



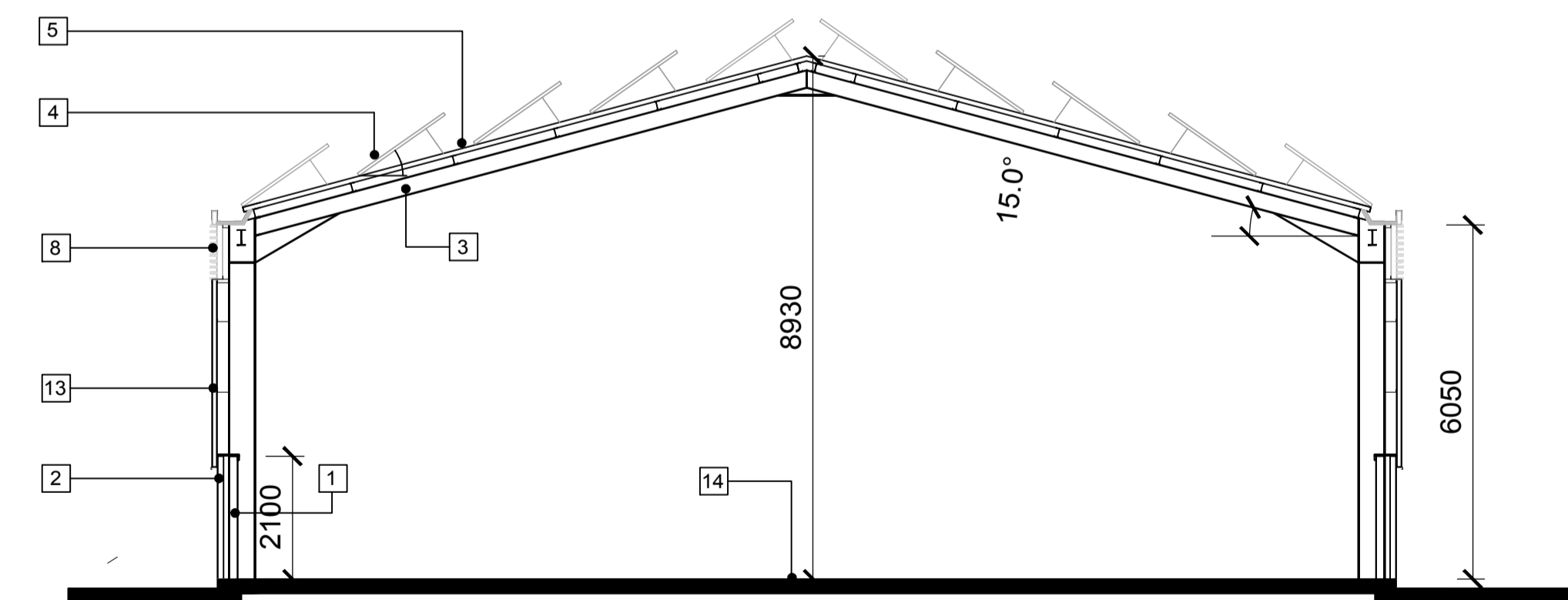
**TYPICAL BUILDING PLAN OF UNITS 21**



**TYPICAL ROOF PLAN OF INDICATING PV LAYOUT**



**TYPICAL FRONT AND REAR ELEVATION OF AQUACULTURE UNITS 21**



**TYPICAL SECTION THROUGH PORTAL 1:100**

This drawing is copyright ©  
NOTE: All dimensions to be checked on site and not scaled from the drawing.

<p>HUW GRIFFITHS ARCHITECTS LTD PENSER STREET BRISTOL CHARTERED ARCHITECT</p>	<p>CLIENT Egnedol UK Ltd.</p>	<p>JOB TITLE Waterston Eco Park Site Milford Haven</p>	<p>DWG TITLE Proposed Plan Section Elevations and Site Location Plan of Aquaculture Units 21</p>
	<p>DATE November 2015</p>	<p>DRAWN [ ]</p>	<p>CHECKED [ ]</p>
<p>NORTH HILL, 7 ST. JAMES CRESCENT, SWANSEA, SA1 6DP Tel: 01792 644038 Fax: 01792 645446 Email: design@huwgriffithsarchitects.co.uk</p>		<p>DWG NO HG-15-07-P01</p>	<p>SIV Planning</p>