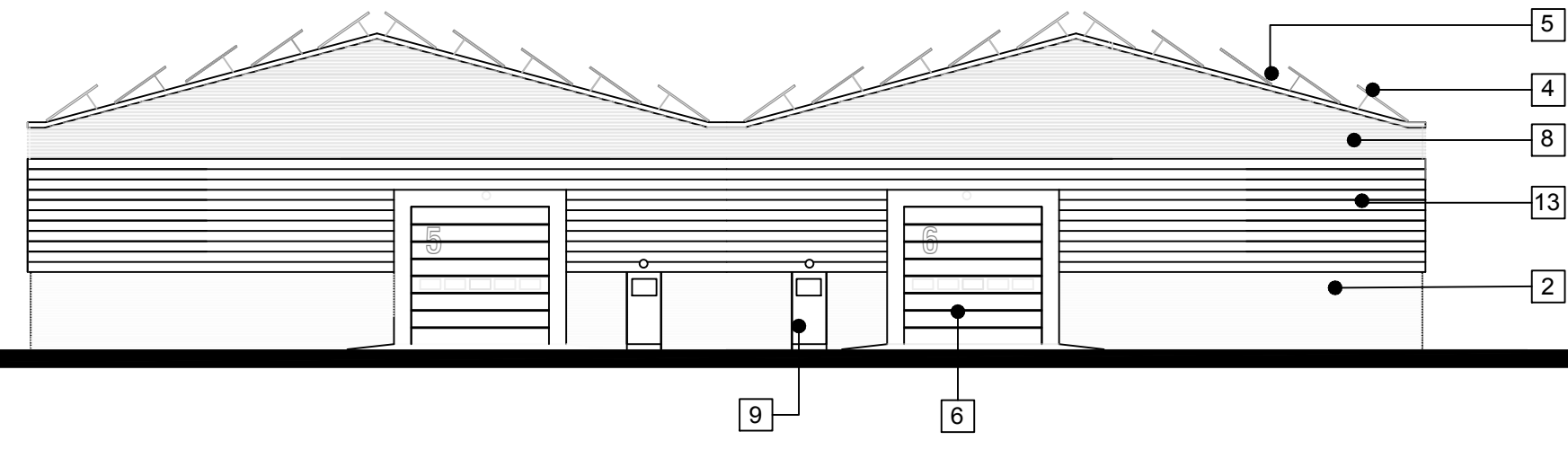
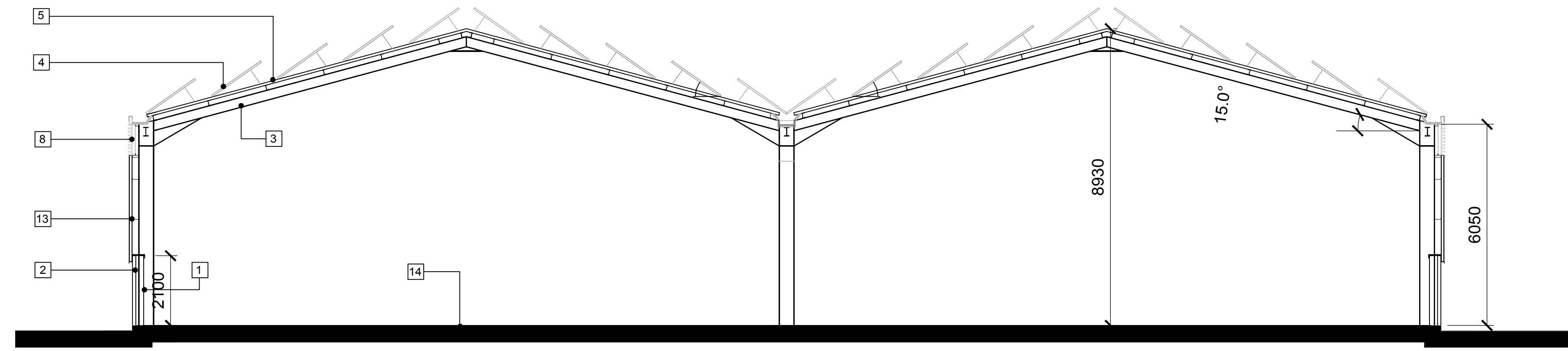


- KEY:
1. 140MM CONCRETE BLOCK INNER SKIN UP TO 2100 AFFL
 2. 102MM OUTER SKIN OF FACE BRICKWORK
 3. PORTAL FRAME TO STRUCTURAL ENGINEERS DETAILS
 4. 1800X1000 ROOF MOUNTED PV PANELS
 5. COMPOSITE PANEL FULLY INSULATED ROOF SYSTEM KINGSPAN OR SIMILAR SUPPORTED BY STRUCTURAL PURLINS
 6. HORIZONTAL PANEL UP AND OVER DOORS BY CRAWFORD OR SIMILAR
 7. FULL HEIGHT GLAZED UNITS
 8. HIGH LEVEL STEEL LOUVRE SYSTEM WITH INSULATED BLANKING PANELS
 9. STEEL FACED ESCAPE DOORS
 10. OFFICE FORMED IN 100MM METAL STUDWORK 2600MM AFFL
 11. MALE FACILITIES (SHOWER, WC AND CHANGING) FORMED IN 100MM METAL STUDWORK 2600MM AFFL
 12. FEMALE FACILITIES (SHOWER, WC AND CHANGING) FORMED IN 100MM METAL STUDWORK 2600MM AFFL
 13. 300MM COMPOSITE STEEL FACED WALL PANEL HORIZONTALLY LAID. PANEL SYSTEM BY KINGSPAN OR SIMILAR
 14. POWER FLOATED CONCRETE SLAB TO ENGINEERS DETAILS
 15. DISABLED WC
 16. RAINWATER STORAGE TANKS 2700MM DIA 10.000L

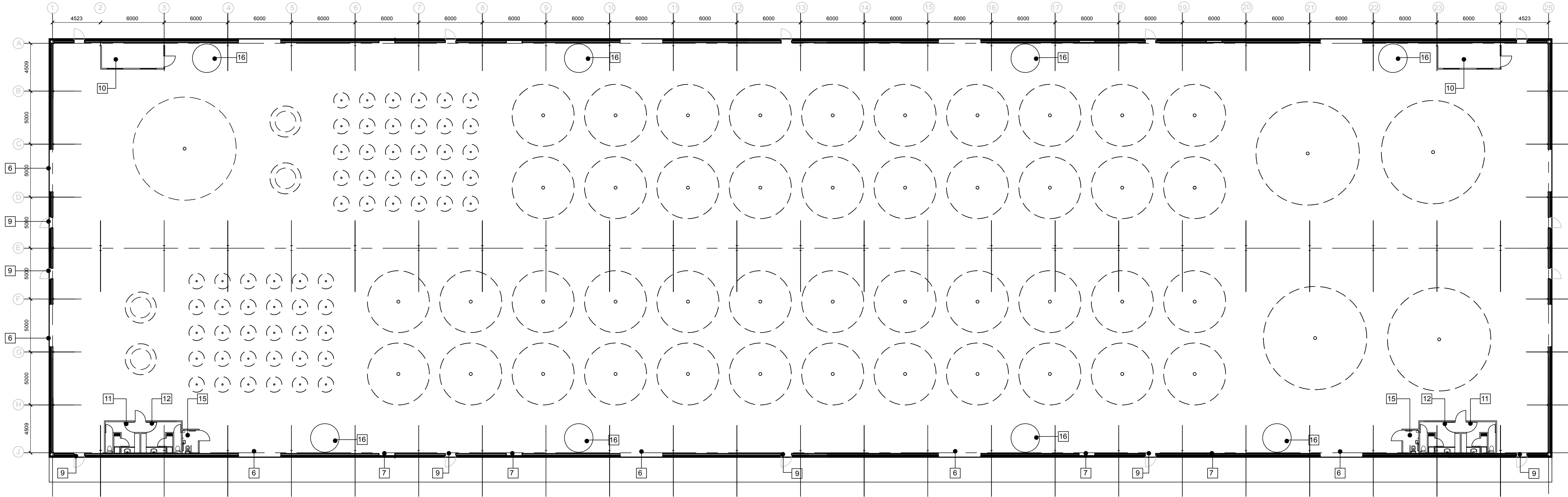


TYPICAL GABLE ELEVATION OF AQUACULTURE UNITS 22

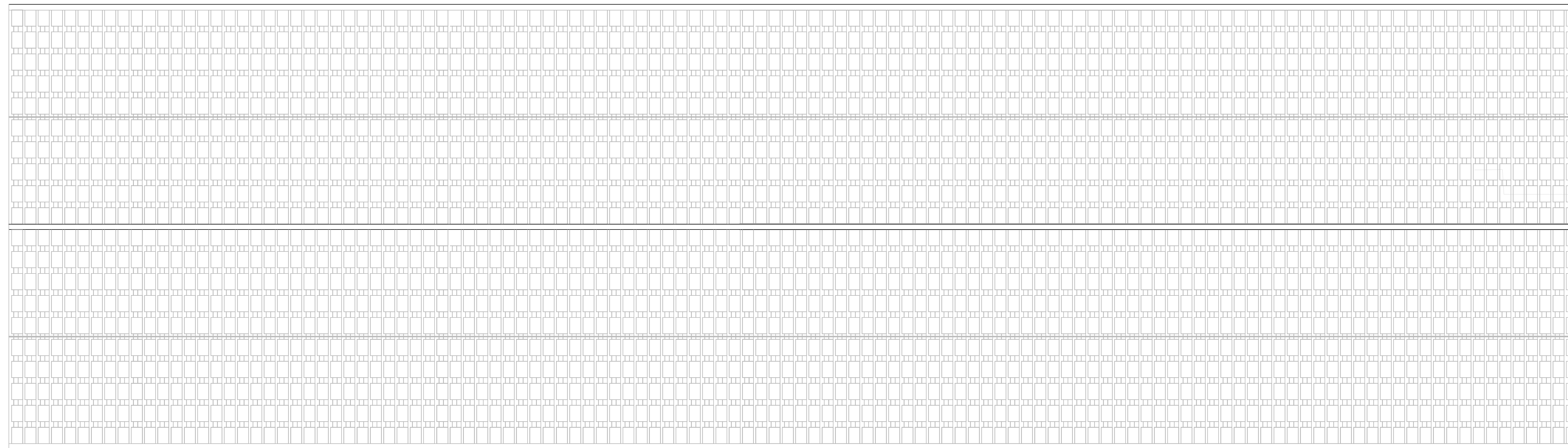


TYPICAL SECTION 1:100

TYPICAL PLAN OF AQUACULTURE UNITS 22



TYPICAL ROOF PLAN OF AQUACULTURE UNITS



TYPICAL FRONT AND REAR ELEVATION AQUACULTURE UNITS 22

