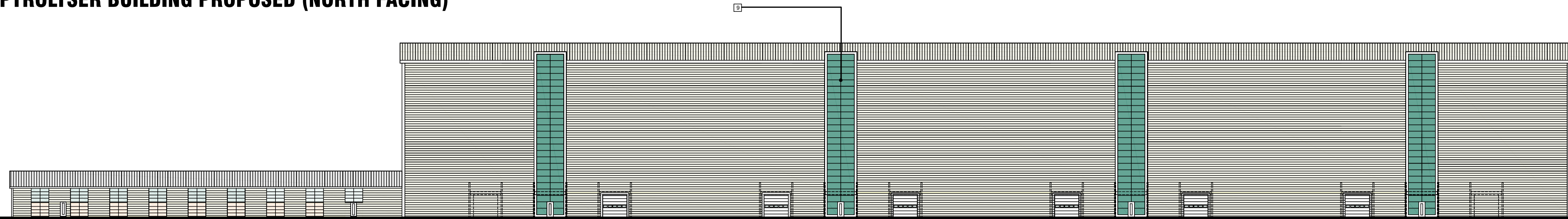
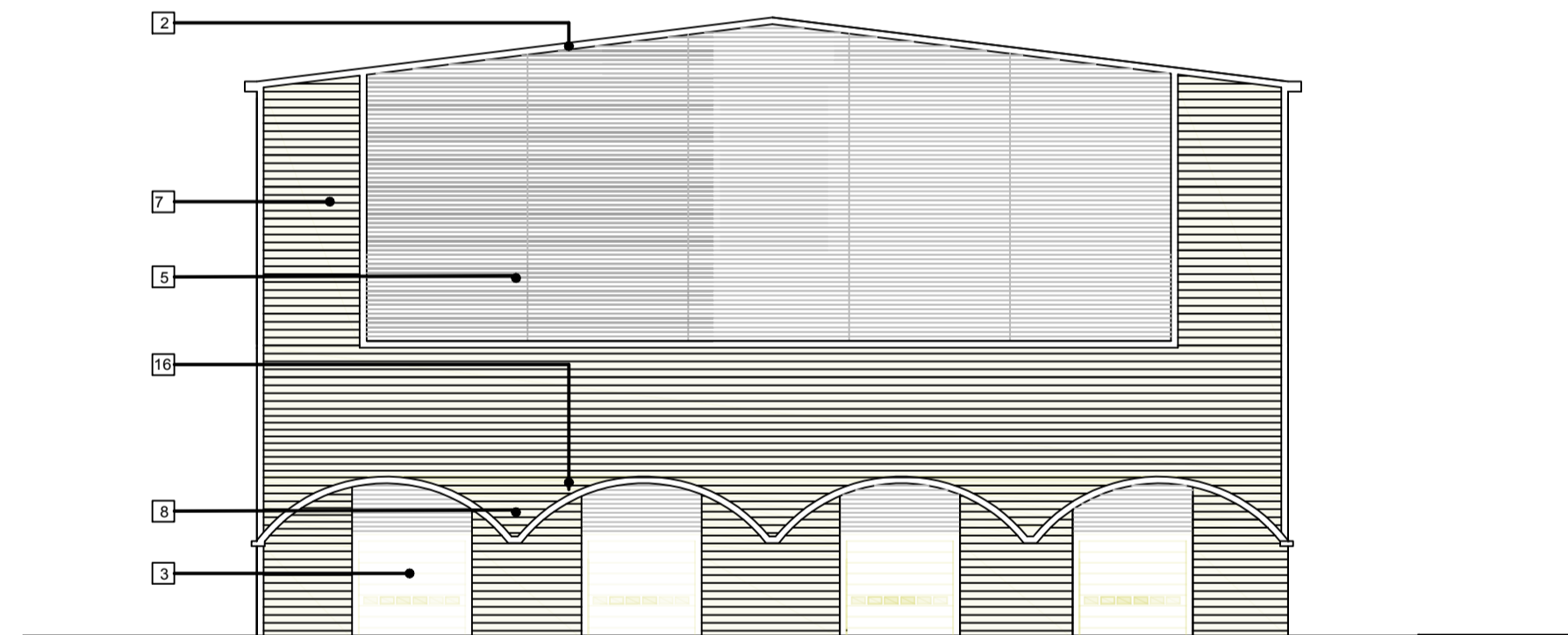
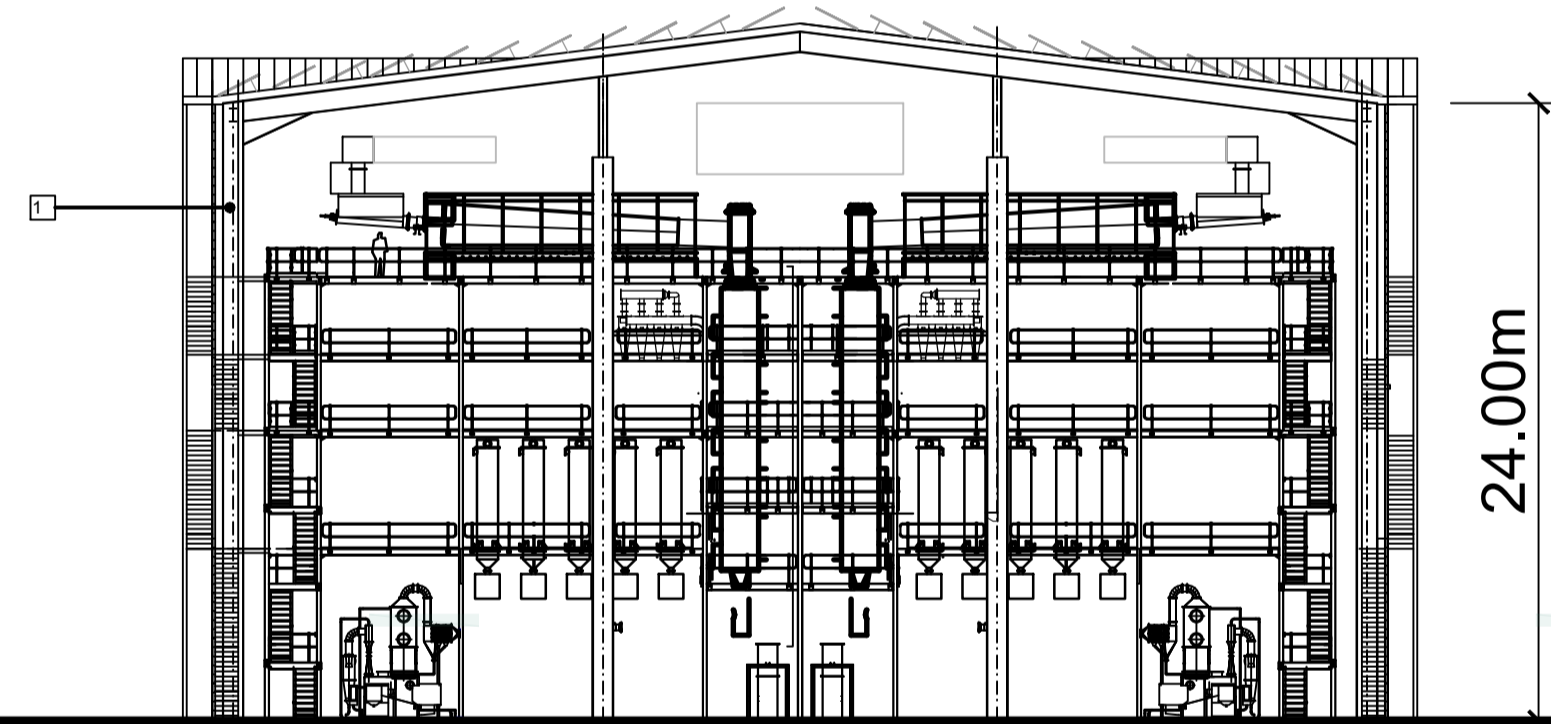
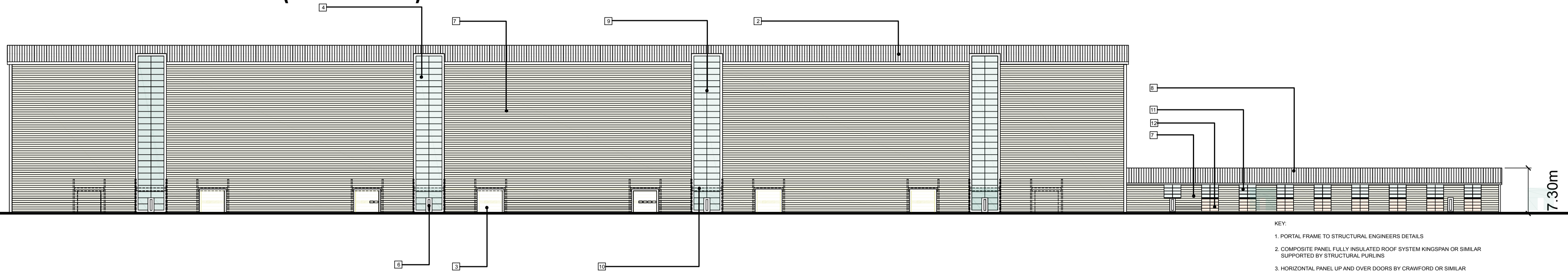


**PYROLYSER BUILDING PROPOSED (NORTH FACING)**



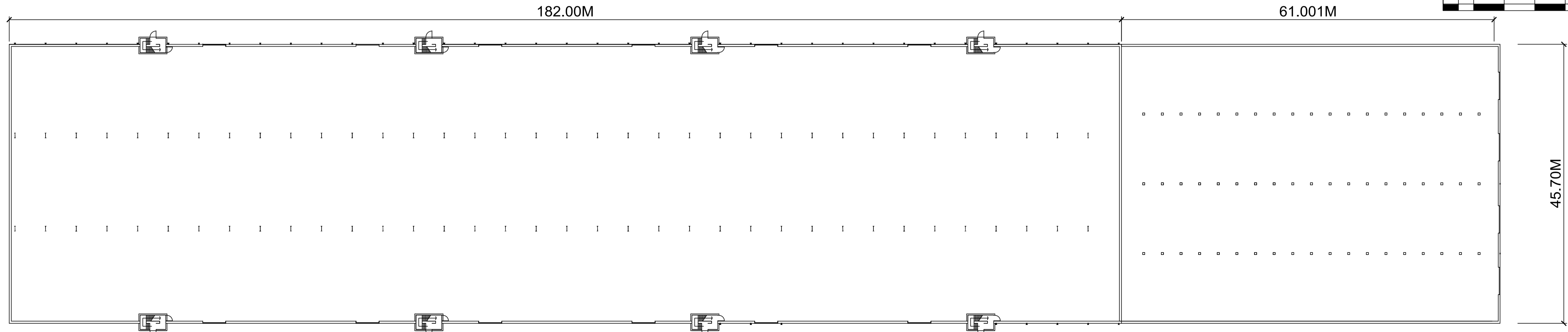
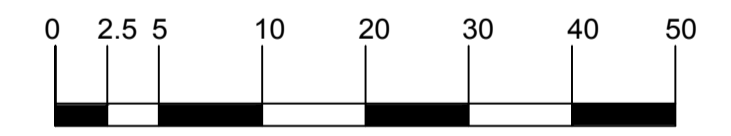
**PYROLYSER BUILDING PROPOSED (SOUTH FACING)**



- KEY:
- 1. PORTAL FRAME TO STRUCTURAL ENGINEERS DETAILS
  - 2. COMPOSITE PANEL FULLY INSULATED ROOF SYSTEM KINGSPAN OR SIMILAR SUPPORTED BY STRUCTURAL PURLING
  - 3. HORIZONTAL PANEL UP AND OVER DOORS BY CRAWFORD OR SIMILAR
  - 4. ALUMINIUM FRAMED GLAZED UNITS
  - 5. STEEL LOUVRE SYSTEM WITH INSULATED BLANKING PANELS
  - 6. STEEL FACED ESCAPE DOORS
  - 7. 300MM COMPOSITE STEEL FACED WALL PANEL HORIZONTALLY LAD. PANEL SYSTEM BY KINGSPAN OR SIMILAR
  - 8. EXISTING CONCRETE BARREL VAULTED ROOF RE-CLAD IN PROFILED CURVED METAL SHEETING TO SUIT
  - 9. MEANS OF ESCAPE STAIR TOWER
  - 10. DOTTED LINE INDICATES WHERE EXISTING OPENS OCCUR IN CONC WALL
  - 11. EXISTING OPENINGS RE-GLAZED
  - 12. INSULATED PANEL (TRESPA OR SIMILAR)

**SECTION THROUGH MAIN HALL**

**GABLE ELEVATION SHOWING END ELEVATION OF GRINDING HALL**



**PYROLYSER (1) AND GRINDING HALL (3) BUILDING PROPOSED PLAN**

This drawing is copyright ©  
NOTE: All dimensions to be checked on  
site and not copied from the drawing.