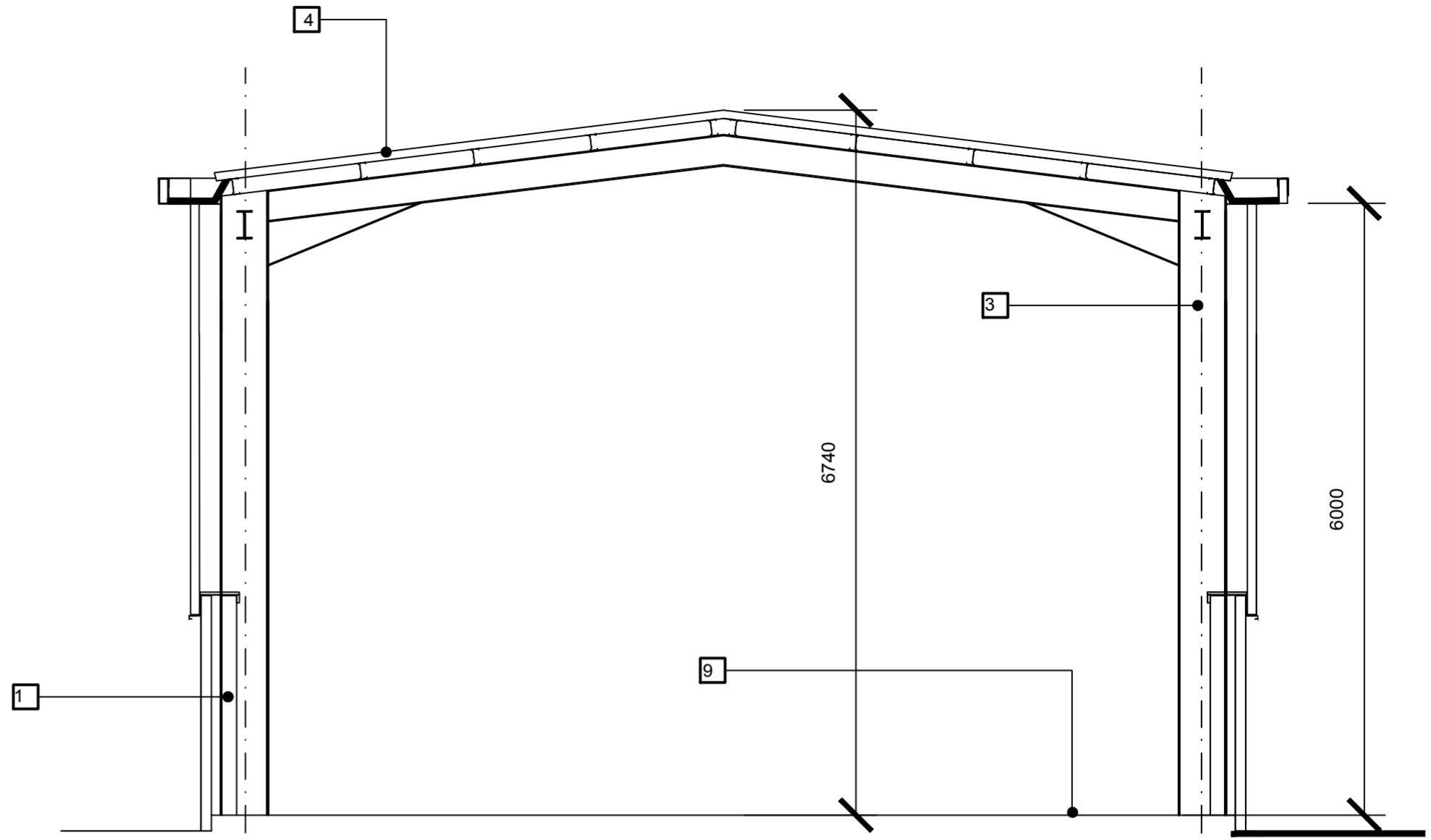
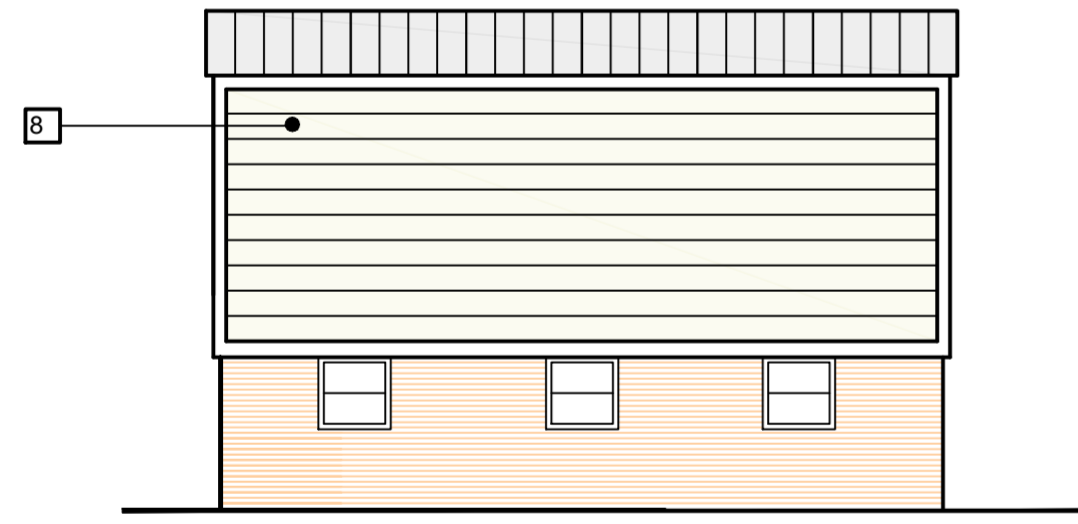


**PLAN OF COLD IRONING BUILDING (1:50)**

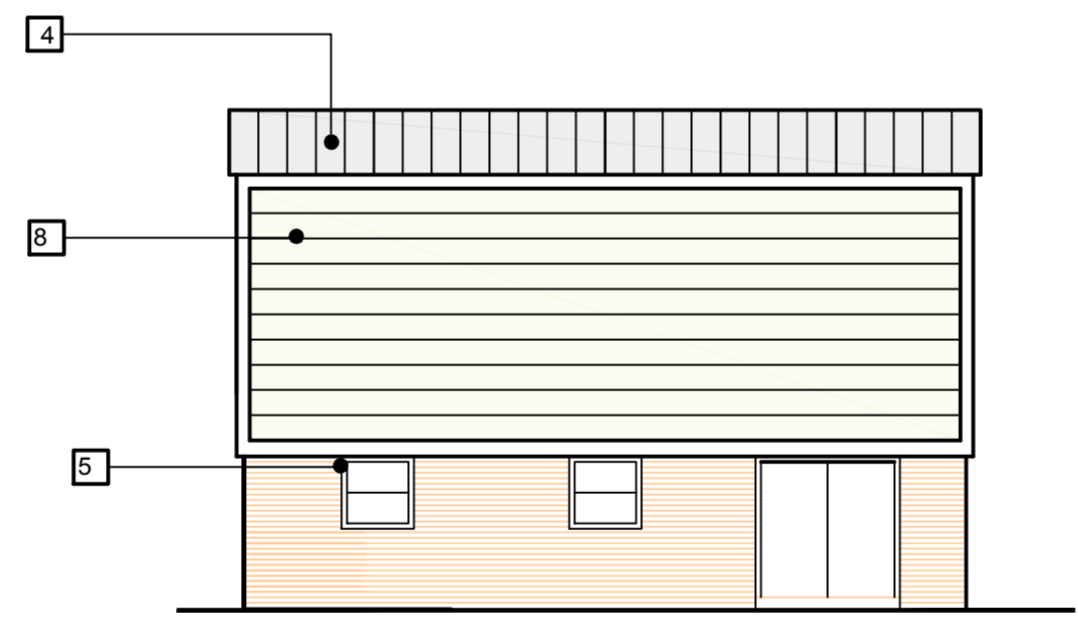


**SECTION (1:50)**

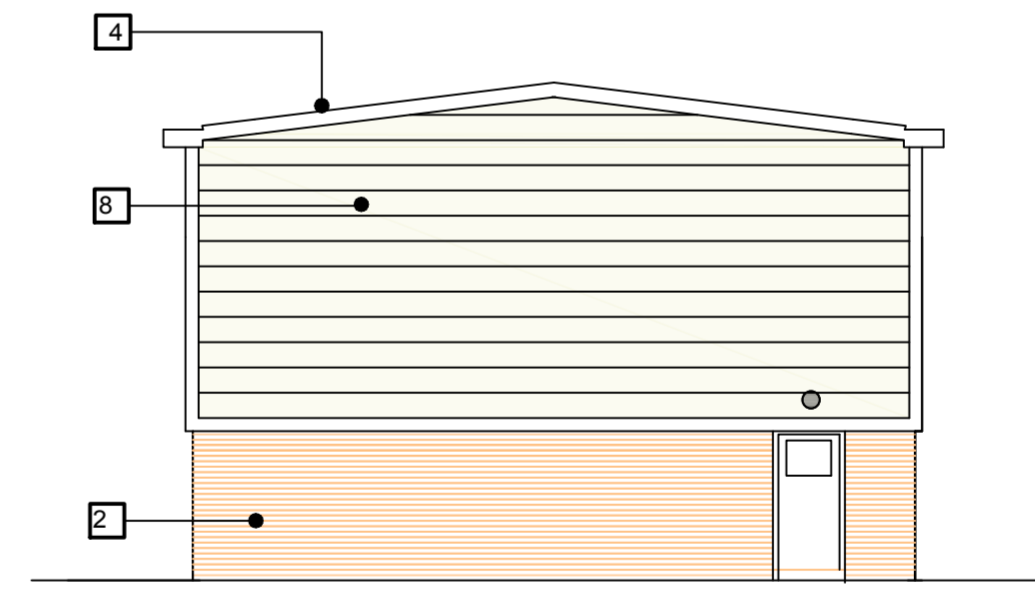
**SOUTH FACING ELEVATION (1:100)**



**NORTH FACING ELEVATION (1:100)**



**EAST FACING GABLE ELEVATION (1:100)**



**KEY:**

- 1. 140MM CONCRETE BLOCK INNER SKIN UP TO 2100 AFFL
- 2. 102MM OUTER SKIN OF FACE BRICKWORK
- 3. PORTAL FRAME TO STRUCTURAL ENGINEERS DETAILS
- 4. COMPOSITE PANEL FULLY INSULATED ROOF SYSTEM KINGSPAN OR SIMILAR SUPPORTED BY STRUCTURAL PURLINS
- 5. ALUMINIUM FRAMED GLAZED UNITS
- 6. MALE FACILITIES (SHOWER, WC AND CHANGING) FORMED IN 100MM METAL STUDWORK 2600MM AFFL
- 7. FEMALE FACILITIES (SHOWER, WC AND CHANGING) FORMED IN 100MM METAL STUDWORK 2600MM AFFL
- 8. 300MM COMPOSITE STEEL FACED WALL PANEL HORIZONTALLY LAID. PANEL SYSTEM BY KINGSPAN OR SIMILAR
- 9. POWER FLOATED CONCRETE SLAB TO ENGINEERS DETAILS

This drawing is copyright ©  
NOTE: All dimensions to be checked on site and not scaled from the drawing.

<p>HUW GRIFFITHS ARCHITECTS LTD PENSAER SIARIEDIG CHARTERED ARCHITECT</p>	<p>CLIENT Egnedol UK Ltd.</p>	<p>JOB TITLE Blackbridge Power Station and Eco Park Milford Haven</p>	<p>DRNG TITLE Cold Ironing Building Plan Section and Elevations</p>	
	<p>DATE January 2016</p>	<p>DRAWN ---</p>	<p>CHECKED ---</p>	<p>SCALE 1:100 / 1:50</p>
<p>HUW GRIFFITHS ARCHITECTS LTD NORTH HILL, 7 ST. JAMES CRESCENT, SWANSEA, SA1 6DP Tel: 01792 644038 Fax: 01792 645446 Email: design@huwgriffithsarchitects.co.uk</p>		<p>DRNG NO HG-15-07-P15</p>	<p>REV ---</p>	<p>PURPOSE Planning</p>